

A46 Coventry Junctions (Walsgrave) Scheme Number: TR010066

6.2 Environmental Statement Figures Figures 8.1 - 8.3

APFP Regulation 5(1)(a)

Planning Act 2008

Infrastructure Planning (Applications: Prescribed Forms
and Procedure) Regulations 2009

Volume 6

June 2025~~November 2024~~

Infrastructure Planning

Planning Act 2008

**The Infrastructure Planning
(Applications: Prescribed Forms and
Procedure) Regulations 2009**

A46 Coventry Junctions (Walsgrave)
Development Consent Order 202[x]

ENVIRONMENTAL STATEMENT FIGURES
Figures 8.1 - 8.3

Regulation Number	Regulation 5(2)(a)
Planning Inspectorate Scheme Reference	TR010066
Application Document Reference	TR010066/APP/6.2
Author	A46 Coventry Junctions (Walsgrave) Project Team, National Highways

Version	Date	Status of Version
Rev 0	November 2024	Application Issue
<u>Rev 0</u>	<u>June 2025</u>	<u>Deadline 3</u>

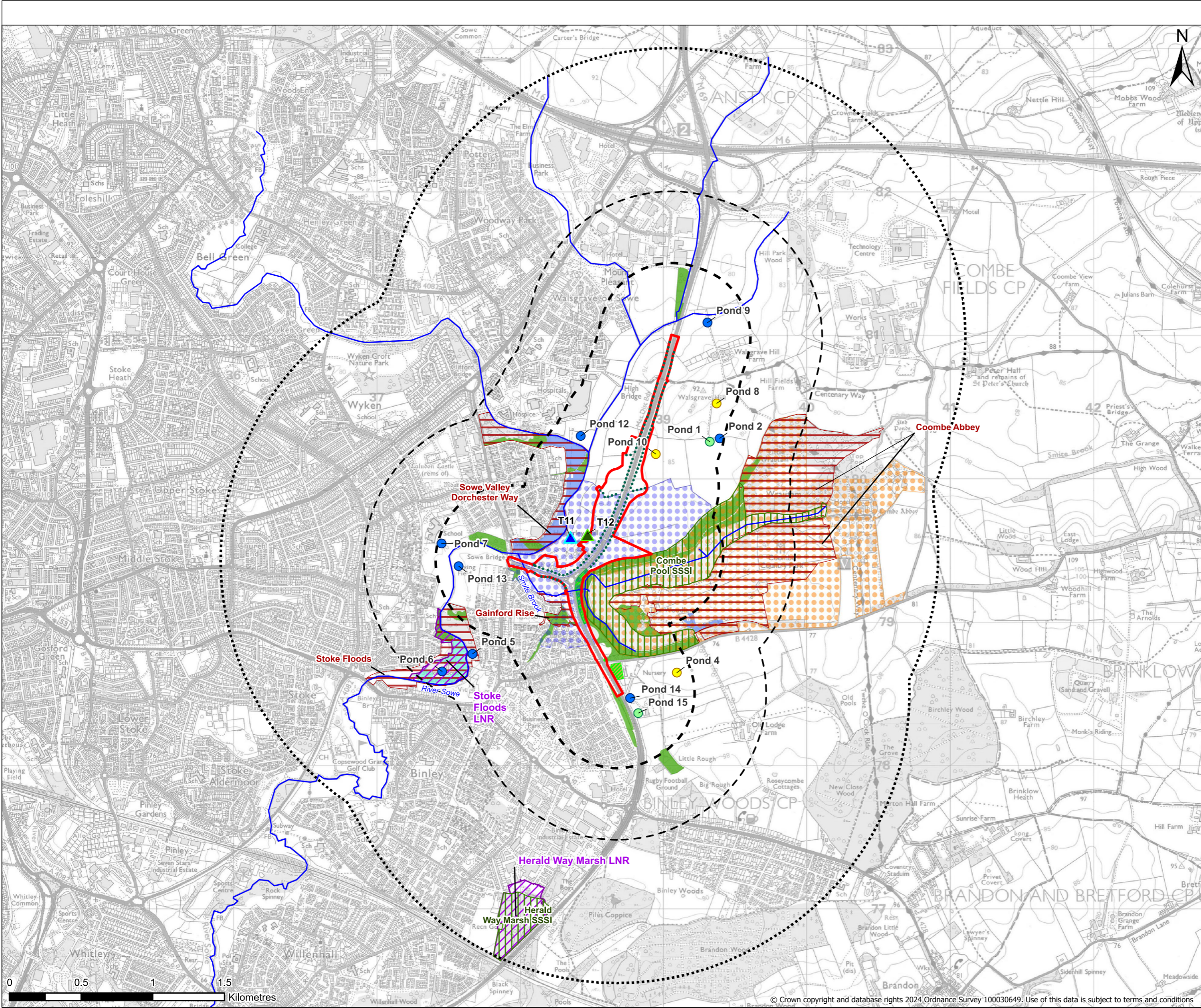
CONTENTS

1.	Environmental Statement Figures	2
----	---------------------------------------	---

1. Environmental Statement Figures

1.1.1. This document contains the following figures:

Figure	Figure Name	
8.1	Designated Sites, Priority Habitats, Ancient Woodland and Veteran Trees	<u>P02</u>
8.2	Ecological Constraints	<u>P02</u>
8. 32	Proposed Construction Mitigation Noise Barrier - December 2026 Daytime	<u>P023</u>



Legend

Order Limits

Order Limits - 500m Buffer

Order Limits - 1km Buffer

Order Limits - 2km Buffer

Veteran tree

Tree beginning to veteranise

Ponds

Confirmed priority habitat pond

Pond dry

Other ponds

Designated sites

Local Nature Reserve (LNR)

Local Wildlife Site

Sites of Special Scientific Interest (SSSI)

Ecosites

Coombe Abbey Pool (part SSSI)

Hungerly Hall Farm

Priority Habitats

Coastal and floodplain grazing marsh

Deciduous woodland

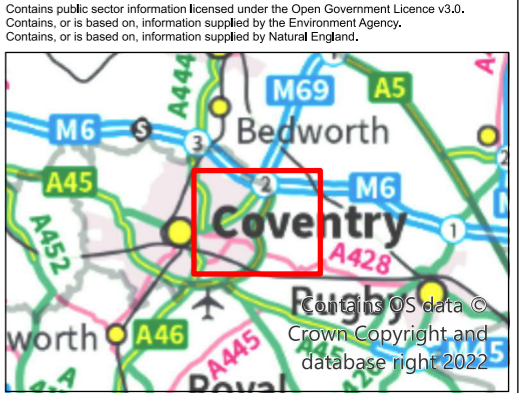
Lowland fens


Traditional orchard

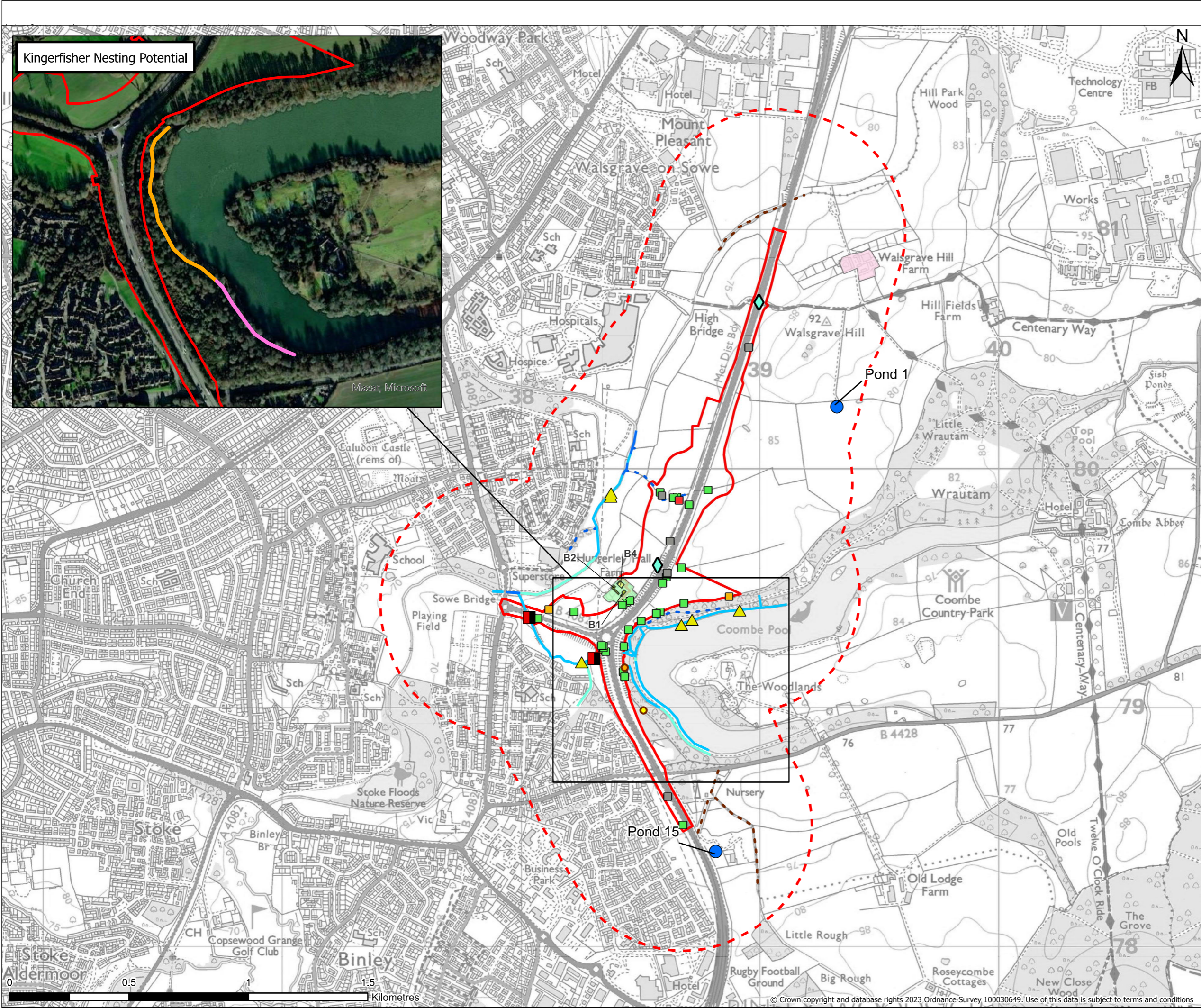
Native hedgerow

Confirmed not priority following ecological survey

NOTE - Coombe is also spelt as Combe in some databases. For consistency, the spelling of Coombe has been used



P02	11.11.2024	MINOR UPDATES	AC	BM	JS
REV	DATE	REVISION NOTE	ORG	CHKD	APP
Client					
<div>national highways</div>					
Project Title					
A46 COVENTRY JUNCTIONS (WALSGRAVE)					
Project Stage					
DCO APPLICATION					
Drawing Title					
FIGURE 8.1: DESIGNATED SITES, PRIORITY HABITATS AND VETERAN TREES					
Suitability					
FOR INFORMATION					
Sheet Size	Scale	Status	Revision		
A3	1:25,000	S2	P02		
Drawing Number					
HE604820-OIL-EBD-00-DR-LB-30056					



Legend

Order Limits

Order Limits - 500m Buffer

Great Crested Newt (Triturus cristatus) Pond

Potentially suitable as a barn owl Tyto alba nest site

Potentially suitable as a barn owl Tyto alba nest site (no access for survey)

Order Sign

Otter Couch

Water Vole Habitat Suitability

Optimal

Sub-optimal

Unsuitable

Dry watercourse

Scoped out watercourse

Invasive Non-native Species

Himalayan Balsam

Trees with Bat Roost Potential

High

Moderate

Low

Negligible

Confirmed bat crossing point

Potential bat roosts at Hungerley Hall Farm

Common pipistrelle, Pipistrellus pipistrellus potential day, night or feeding roost

Unidentified species potential day, night or feeding roost

Approximate closest location of potential Soprano pipistrelle, Pipistrellus pygmaeus day roost

Approximate closest location of potential Common pipistrelle potential day roost

Kingerfisher Nesting Potential

Kingerfisher commuting and foraging habitat only (negligible suitable kingerfisher nesting habitat)

Potential kingerfisher nesting habitat

Invasive Non-native Species

Rhododendron Rhododendron ponticum is present throughout the woodland to the north and north-east of Coombe Pool adjacent to the draft order limits.

Contains public sector information licensed under the Open Government Licence v3.0.
Contains, or is based on, information supplied by the Environment Agency.
Contains, or is based on, information supplied by Natural England.

P02	11.11.2024	MINOR UPDATES	AC	BM	JS
REV	DATE	REVISION NOTE	ORG	CHKD	APP
Client					

Project Title

A46 COVENTRY JUNCTIONS (WALSGRACE)

Project Stage

DCO APPLICATION

Drawing Title

FIGURE 8.2 : ECOLOGICAL CONSTRAINTS

Suitability

FOR INFORMATION

Sheet Size	Scale	Status	Revision
A3	1:15,000	S2	P02

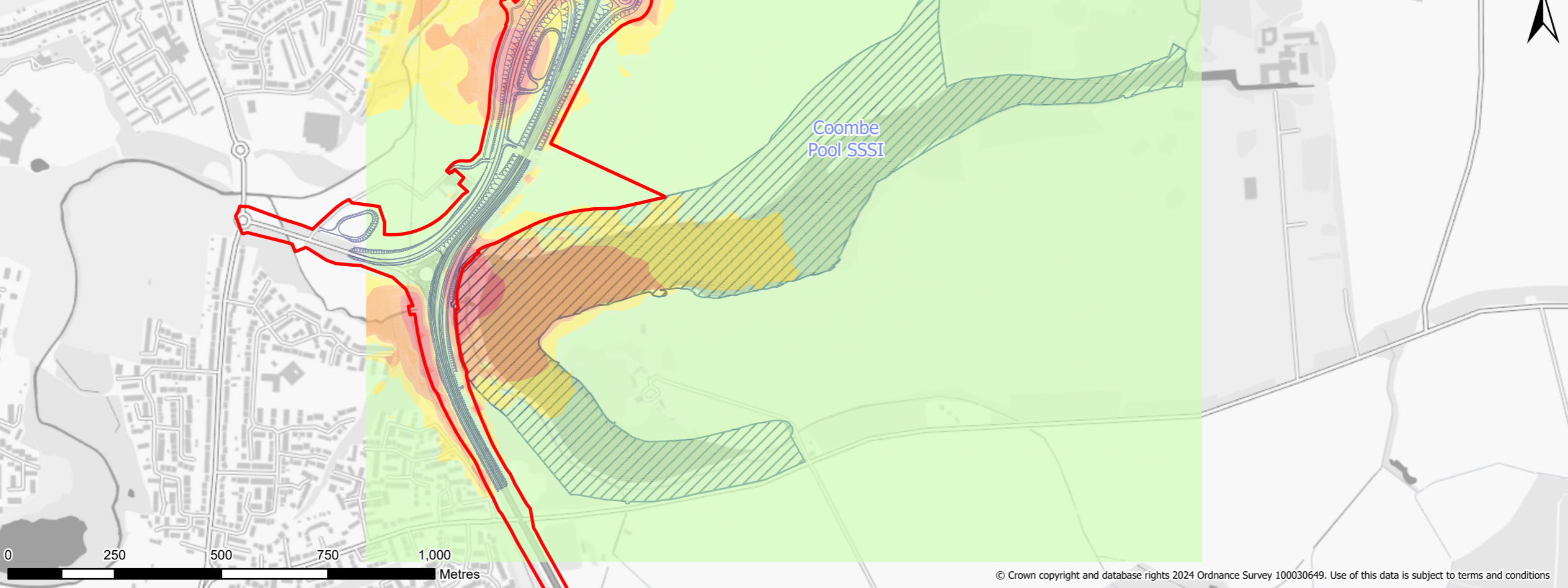
Drawing Number

HE604820-OIL-EBD-00-DR-LB-30057

© Crown copyright and database rights 2023 Ordnance Survey 100030649. Use of this data is subject to terms and conditions

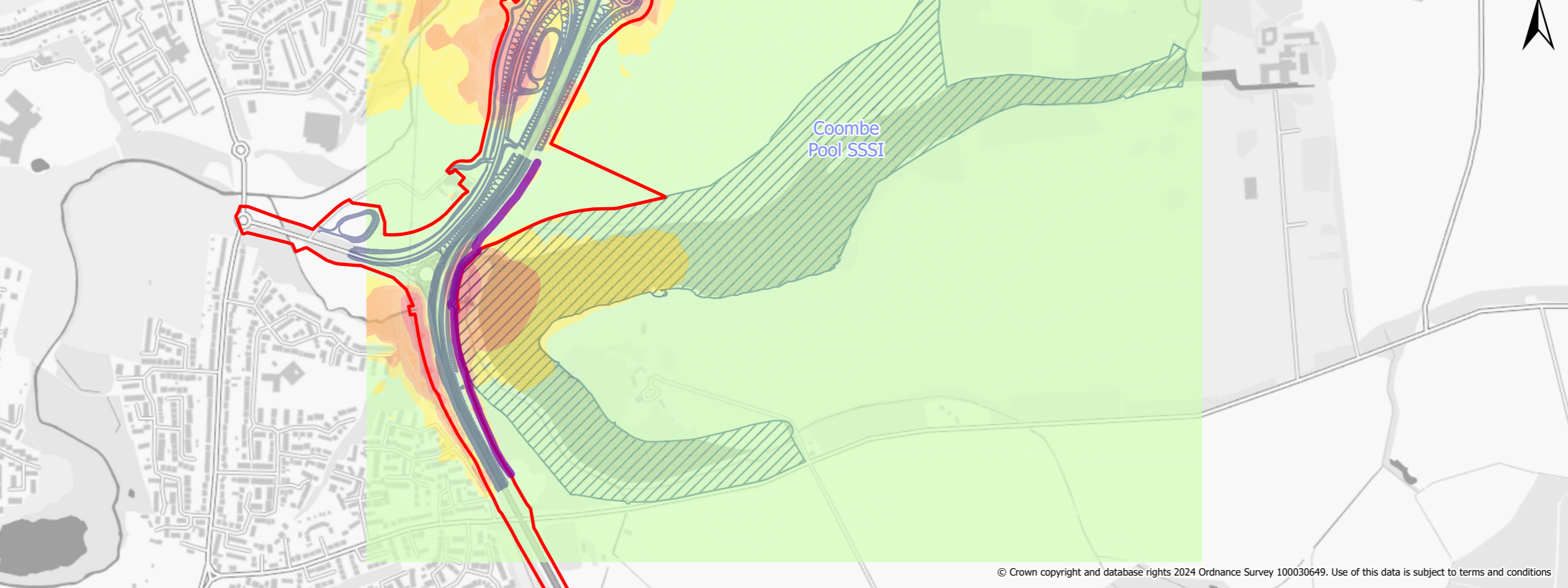
This drawing should not be relied on or used in circumstances other than those for which it was originally prepared and for which Sweco UK Ltd & COWI UK Limited was commissioned. Sweco UK Ltd & COWI UK Limited accepts no responsibility for this drawing to any party other than the person by whom it was commissioned. This drawing has been prepared on behalf of Octavius Infrastructure by Sweco UK Ltd & COWI UK Limited for the titled project or named part thereof and should not be relied upon or used for any other project without an independent check being carried out as to its suitability and prior written authority of Octavius Infrastructure being obtained. Sweco UK Ltd & COWI UK Limited accepts no responsibility or liability for the consequences of this drawing being used for a purpose other than the purposes for which it was commissioned. Any person using or relying on this drawing for such other purpose agrees, and will by such use or reliance be taken to confirm his/her agreement, to indemnify Sweco UK Ltd & COWI UK Limited for all loss or damage resulting therefrom.

NOISE WITHOUT MITIGATION BARRIER



This drawing should not be relied on or used in circumstances other than those for which it was originally prepared and for which Sweco UK Ltd & COWI UK Limited was commissioned. Sweco UK Ltd & COWI UK Limited accepts no responsibility for this drawing to any party other than the person by whom it was commissioned. This drawing has been prepared on behalf of Octavius Infrastructure by Sweco UK Ltd & COWI UK Limited for the titled project or named part thereof and should not be relied upon or used for any other project without an independent check being carried out as to its suitability and prior written authority of Octavius Infrastructure being obtained. Sweco UK Ltd & COWI UK Limited accepts no responsibility or liability for the consequences of this drawing being used for a purpose other than the purposes for which it was commissioned. Any person using or relying on this drawing for such other purpose agrees, and will by such use or reliance be taken to confirm his/her agreement, to indemnify Sweco UK Ltd & COWI UK Limited for all loss or damage resulting therefrom.

NOISE WITH MITIGATION BARRIER



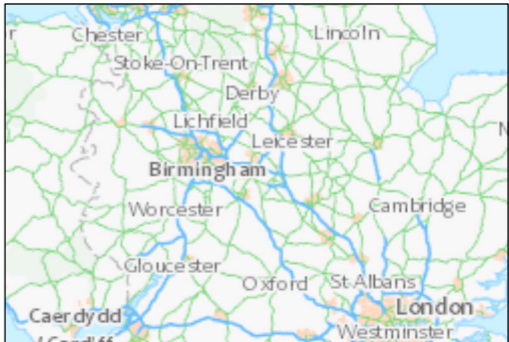
Legend

- Order Limits
- Scheme Design
- Barrier Alignment
- Coombe Pool SSSI

Noise Difference

- ND ≤ -5.0 dB
- 5.0 < ND ≤ -3.0 dB
- 3.0 < ND ≤ 0 dB
- 0 < ND ≤ 3.0 dB
- 3.0 < ND ≤ 5.0 dB
- 5.0 < ND ≤ 10.0 dB
- 10.0 < ND dB

Contains public sector information licensed under the Open Government Licence v3.0.



P02	22.05.2025	DATA UPDATE	AC	BM	CF
REV	DATE	REVISION NOTE	ORG	CHKD	APP

Client



Project Title
A46 COVENTRY JUNCTIONS (WALSgrave)

Project Stage
DCO APPLICATION

Drawing Title
FIGURE 8.3 - PROPOSED CONSTRUCTION MITIGATION NOISE BARRIER – DECEMBER 2026 DAYTIME

Suitability
FOR INFORMATION

Sheet Size	Scale	Status	Revision
A3	1:11,000	S2	P03

Drawing Number
HE604820-OIL-EBD-00-DR-LB-30075